



*Brinkhaus*

**MATTRESSES**

2024

INNOVATIVE SLEEPING CULTURE SINCE 1847





The success story that is BRINKHAUS, a company full of tradition, began in Warendorf in Germany back in 1847. A lot has happened since then. We now face new markets, new requirements and new challenges. And we deal with it all in a flexible and innovative way, without compromising on our tried and tested BRINKHAUS quality.

BRINKHAUS products are made with the latest state-of-the-art knowledge and methods, entirely according to the customer's wishes and requirements. We source high-class filling materials from all over the world and process them into quality products.

Today, the long-established BRINKHAUS brand stands for outstanding sleeping comfort in over 40 countries around the world.



*Brinkhaus*

# CONTENTS

## MATTRESSES

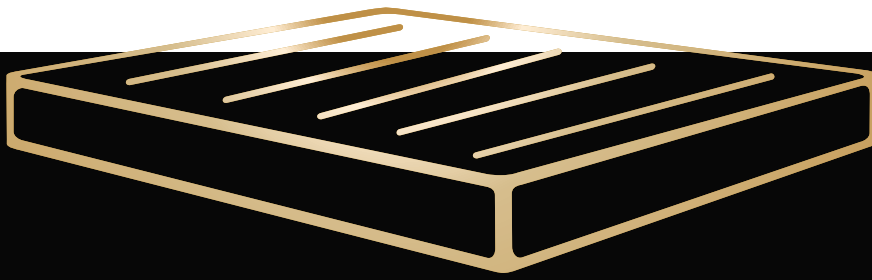
### COLD FOAM MATTRESSES

- 6 Livorno KS
- 10 Florenz KS
- 14 Verona KS
- 20 Como KS

### BARREL POCKET SPRING CORE MATTRESSES

- 8 Livorno TTFK
- 12 Florenz TTFK
- 16 Verona TTFK
- 18 Lucca TTFK
- 22 Como TTFK
- 24 Perugia TTFK





# MATTRESSES

... an invitation to pure relaxation.

Lie back and relax during the day or wind down for a restful night's sleep.

Feeling completely at ease and safe in the knowledge that all is well.

A perfectly designed system for a well-balanced, healthy sleep.

We wish you a good night.





# LIVORNO KS



# LIVORNO KS

COLD FOAM MATTRESS

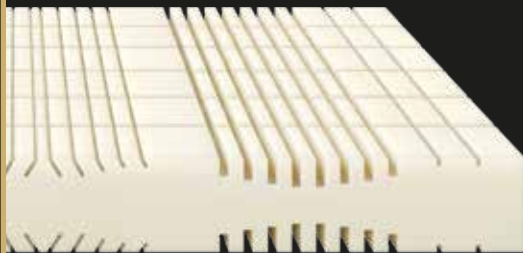


# LIVORNO KS

## COLD FOAM MATTRESS



Core height: approx. 20 cm



### Pronounced shoulder comfort area

↳ Lets your shoulder sink in comfortably and relieves pressure when lying on your side

### 3D cube cut technology

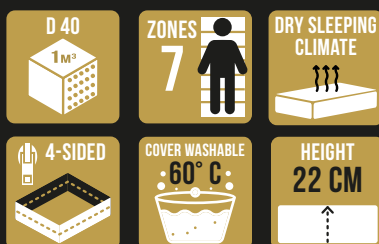
↳ Soft and pressure-relieving surface lets the body gently sink in

↳ Good support from the core base

### FEATURES

- Cover fabric** Double layer fabric - 72% polyester, 27% viscose and 1% elastane (lycra)
- Core** approx. 20 cm high cold foam core with 7 ergonomic comfort zones (D 40) in 3D cube cut technology with a pronounced shoulder comfort zone
- Hygiene** Removable cover, washable up to 60 °C
- Core height** approx. 20 cm
- Total height** approx. 22 cm

Total size*	Item no	Item no
in cm	Firmness level H2	Firmness level H3
80 x 200	03 900 270 245	03 900 271 245
90 x 190	03 900 270 128	03 900 271 128
90 x 200	03 900 270 159	03 900 271 159
100 x 200	03 900 270 132	03 900 271 132
120 x 200	03 900 270 134	03 900 271 134
140 x 200	03 900 270 143	03 900 271 143
160 x 200	03 900 270 150	03 900 271 150
180 x 200	03 900 270 152	03 900 271 152
200 x 200	03 900 270 154	03 900 271 154





# LIVORNO TTFK



# LIVORNO TTFK

BARREL POCKET SPRING CORE MATTRESS





# LIVORNO TTFK

## BARREL POCKET SPRING CORE MATTRESS



Core height: approx. 20 cm



### Barrel pocket spring core mattress

- ➔ Soft and pressure-relieving cold foam comfort top layer lets the body gently sink in
- ➔ Good support from the barrel pocket spring core base

### Excellent ventilation

- ➔ While you sleep, every movement of your body activates ventilation in the core of the mattress, ensuring a dry and healthy sleep climate

### FEATURES

<b>Cover fabric</b>	Double layer fabric - 72% polyester, 27% viscose and 1% elastane (lycra)
<b>Core</b>	approx. 20 cm high 500 barrel pocket spring core (360 springs for 90 x 200 cm) with 7 ergonomic comfort zones comfort top layer made of cold foam (D 40) on both sides
<b>Hygiene</b>	Removable cover, washable up to 60 °C
<b>Core height</b>	approx. 20 cm
<b>Total height</b>	approx. 22 cm

Total size*	Item no	Item no	Item no
in cm	Firmness level H2	Firmness level H3	Firmness level H4
80 x 200	03 900 280 245	03 900 281 245	03 900 282 245
90 x 190	03 900 280 128	03 900 281 128	03 900 282 128
90 x 200	03 900 280 159	03 900 281 159	03 900 282 159
100 x 200	03 900 280 132	03 900 281 132	03 900 282 132
120 x 200	03 900 280 134	03 900 281 134	03 900 282 134
140 x 200	03 900 280 143	03 900 281 143	03 900 282 143
160 x 200	03 900 280 150	03 900 281 150	03 900 282 150
180 x 200	03 900 280 152	03 900 281 152	03 900 282 152
200 x 200	03 900 280 154	03 900 281 154	03 900 282 154



# FLORENZ KS



# FLORENZ KS

COLD FOAM MATTRESS

\*For prices and information on other sizes, please contact your specialist dealer.



# FLORENZ KS

## COLD FOAM MATTRESS



Core height: approx. 20 cm



### 3D cube cut technology

- ➔ Soft and pressure-relieving surface lets the body gently sink in
- ➔ Good support from the core base

### Gel-infused top layer

- ➔ Extra-soft comfort side
- ➔ Good ventilation thanks to Rhombo-therm press-cut pattern

### Pronounced shoulder comfort area

- ➔ Lets your shoulder sink in comfortably and relieves pressure when lying on your side

### FEATURES

- Cover fabric** Double layer fabric - 72% polyester, 27% viscose and 1% elastane (lycra)
- Core** approx. 20 cm high 7-zone cold foam core (D 40) with extremely pronounced shoulder comfort zone and gel-infused top layer with Rhombo-therm® press-cut pattern on both sides
- Hygiene** Removable cover, washable up to 60 °C
- Core height** approx. 20 cm
- Total height** approx. 22 cm

Total size*	Item no	Item no
in cm	Firmness level H2	Firmness level H3
80 x 200	03 900 250 245	03 900 251 245
90 x 190	03 900 250 128	03 900 251 128
90 x 200	03 900 250 159	03 900 251 159
100 x 200	03 900 250 132	03 900 251 132
120 x 200	03 900 250 134	03 900 251 134
140 x 200	03 900 250 143	03 900 251 143
160 x 200	03 900 250 150	03 900 251 150
180 x 200	03 900 250 152	03 900 251 152
200 x 200	03 900 250 154	03 900 251 154



# FLORENZ TTFK



# FLORENZ TTFK

BARREL POCKET SPRING CORE MATTRESS

\*For prices and information on other sizes, please contact your specialist dealer.





# FLORENZ TTFK

## BARREL POCKET SPRING CORE MATTRESS



Core height: approx. 20 cm



### 3D cube cut technology

- ➔ Soft and pressure-relieving surface lets the body gently sink in
- ➔ Good support from the core base

### Gel-infused top layer

- ➔ Extra-soft comfort side
- ➔ Good ventilation thanks to Rhombo-therm press-cut pattern

### FEATURES

<b>Cover fabric</b>	Double layer fabric - 72% polyester, 27% viscose and 1% elastane (lycra)
<b>Core</b>	approx. 20 cm high 500 barrel pocket spring core (360 springs for 90 x 200 cm) with 3.5 cm gel-infused top layer (D 40) and Rhombo-therm® press-cut pattern on both sides
<b>Hygiene</b>	Removable cover, washable up to 60 °C
<b>Core height</b>	approx. 20 cm
<b>Total height</b>	approx. 22 cm

Total size*	Item no	Item no
in cm	Firmness level H2	Firmness level H3
80 x 200	03 900 260 245	03 900 261 245
90 x 190	03 900 260 128	03 900 261 128
90 x 200	03 900 260 159	03 900 261 159
100 x 200	03 900 260 132	03 900 261 132
120 x 200	03 900 260 134	03 900 261 134
140 x 200	03 900 260 143	03 900 261 143
160 x 200	03 900 260 150	03 900 261 150
180 x 200	03 900 260 152	03 900 261 152
200 x 200	03 900 260 154	03 900 261 154



# VERONA KS



# VERONA KS

COLD FOAM MATTRESS

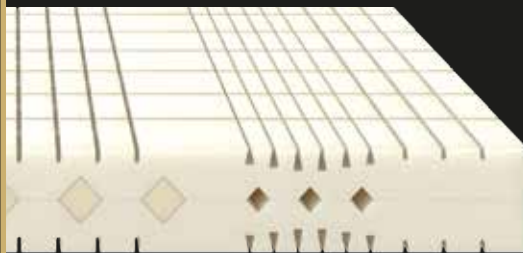


# VERONA KS

## COLD FOAM MATTRESS



Core height: approx. 22 cm



### Slat-cut technology

- Surface lets the body gently sink in
- Deep shoulder area recess

### Reinforced core centre

- Support function for the centre of the body thanks to insert made of firm material

### Pronounced shoulder comfort zone

- Lets your shoulder sink in comfortably and relieves pressure when lying on your side

### FEATURES

#### Cover fabric

Double layer fabric - 72% polyester, 27% viscose and 1% elastane (lycra) with grey climate band

#### Core

approx. 22 cm high 7-zone cold foam core (D 55) with 4 core inserts to support the pelvic area and 3 recesses in the shoulder area to allow your shoulder to sink in very softly

#### Hygiene

Removable cover, washable up to 60 °C

#### Core height

approx. 22 cm

#### Total height

approx. 24 cm

Total size*	Item no	Item no	Item no
in cm	Firmness level H2	Firmness level H3	Firmness level H4
80 x 200	03 900 200 245	03 900 201 245	03 900 202 245
90 x 190	03 900 200 128	03 900 201 128	03 900 202 128
90 x 200	03 900 200 159	03 900 201 159	03 900 202 159
100 x 200	03 900 200 132	03 900 201 132	03 900 202 132
120 x 200	03 900 200 134	03 900 201 134	03 900 202 134
140 x 200	03 900 200 143	03 900 201 143	03 900 202 143
160 x 200	03 900 200 150	03 900 201 150	03 900 202 150
180 x 200	03 900 200 152	03 900 201 152	03 900 202 152
200 x 200	03 900 200 154	03 900 201 154	03 900 202 154



# VERONA TTFK



# VERONA TTFK

BARREL POCKET SPRING CORE MATTRESS





Core height: approx. 22 cm



**Rhombi-therm top layer**

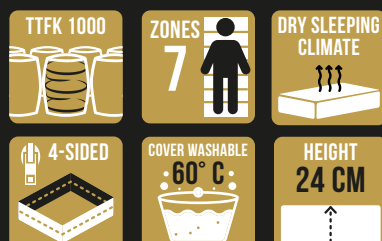
↳ Supports good ventilation of the mattress

**Barrel pocket spring core mattress**

↳ Rhombi-therm top layer made of ultra soft foam lets the body sink in very gently while providing significant pressure relief  
 ↳ Good support from the barrel pocket spring core base

**Pronounced shoulder comfort zone**

↳ Lets your shoulder sink in comfortably and relieves pressure when lying on your side



# VERONA TTFK

## BARREL POCKET SPRING CORE MATTRESS

### FEATURES

- Cover fabric** Double layer fabric - 72% polyester, 27% viscose and 1% elastane (lycra) with grey climate band
- Core** approx. 22 cm high 1000 barrel pocket spring core (688 springs for 90 x 200 cm) with 7 ergonomic comfort zones and 4.5 cm gel-infused top layer, grooves (D 40) and Rhombi-therm® press-cut pattern on both sides
- Hygiene** Removable cover, washable up to 60 °C
- Core height** approx. 22 cm
- Total height** approx. 24 cm

Total size*	Item no	Item no	Item no
in cm	Firmness level H2	Firmness level H3	Firmness level H4
80 x 200	03 900 210 245	03 900 211 245	03 900 212 245
90 x 190	03 900 210 128	03 900 211 128	03 900 212 128
90 x 200	03 900 210 159	03 900 211 159	03 900 212 159
100 x 200	03 900 210 132	03 900 211 132	03 900 212 132
120 x 200	03 900 210 134	03 900 211 134	03 900 212 134
140 x 200	03 900 210 143	03 900 211 143	03 900 212 143
160 x 200	03 900 210 150	03 900 211 150	03 900 212 150
180 x 200	03 900 210 152	03 900 211 152	03 900 212 152
200 x 200	03 900 210 154	03 900 211 154	03 900 212 154

# LUCCA TTFK



# LUCCA TTFK

BARREL POCKET SPRING CORE MATTRESS



# LUCCA TTFK

## BARREL POCKET SPRING CORE MATTRESS



Core height: approx. 22 cm



### Premium cold foam top layer

- ➔ With micro 3D Prisma cut technology and 7 ergonomic comfort zones

### High-quality barrel pocket spring core

- ➔ Extremely high point-elasticity thanks to the 1000 barrel pocket spring core
- ➔ Extremely good body support from the barrel pocket spring core base

### FEATURES

- Cover fabric** Double layer fabric - 61% polyester, 35% viscose and 4% elastane (lycra) quilted with 200 g/m<sup>2</sup> climate fibre and 10 mm comfort foam padding
- Core** approx. 22 cm high 1000 barrel pocket spring core (688 springs for 90 x 200 cm) with 7 ergonomic comfort zones and approx. 5 cm high premium quality cold foam comfort top layer (D 55) with micro 3D Prisma cut technology on both sides
- Hygiene** Removable cover, washable up to 60 °C
- Core height** approx. 22 cm
- Total height** approx. 26 cm

Total size*	Item no	Item no	Item no
in cm	Firmness level H2	Firmness level H3	Firmness level H4
80 x 200	03 900 220 245	03 900 221 245	03 900 222 245
90 x 190	03 900 220 128	03 900 221 128	03 900 222 128
90 x 200	03 900 220 159	03 900 221 159	03 900 222 159
100 x 200	03 900 220 132	03 900 221 132	03 900 222 132
120 x 200	03 900 220 134	03 900 221 134	03 900 222 134
140 x 200	03 900 220 143	03 900 221 143	03 900 222 143
160 x 200	03 900 220 150	03 900 221 150	03 900 222 150
180 x 200	03 900 220 152	03 900 221 152	03 900 222 152
200 x 200	03 900 220 154	03 900 221 154	03 900 222 154



# COMO KS



# COMO KS

COLD FOAM MATTRESS



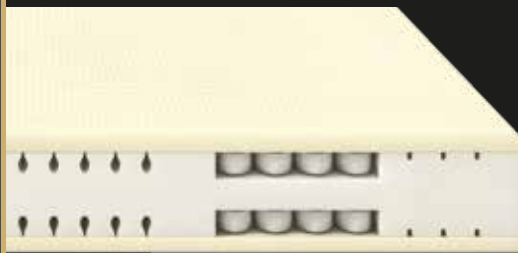


# COMO KS

## COLD FOAM MATTRESS



Core height: approx. 22 cm



### Rhombi-therm top layer

- Extra-soft comfort side
- Good ventilation

### Core cut technology

- Soft and pressure-relieving surface lets the body gently sink in
- Good support from the core base

### Pronounced shoulder comfort zone

- Super-soft tubes made of cold foam let your shoulder sink in deeply when lying on your side

### FEATURES

#### Cover fabric

Double layer fabric - 61% polyester, 35% viscose and 4% elastane (lycra) quilted with 200 g/m<sup>2</sup> climate fibre and 10 mm comfort foam padding

#### Core

approx. 22 cm extremely high point-elastic cold foam core (D 55) with 7 ergonomic comfort zones and 172 cm super-soft tubes (for 90 x 200 cm) in the shoulder area on both sides, and with approx. 3 cm high premium comfort top layer made of cold foam (D 55) Rhombi-therm press-cut pattern

#### Hygiene

Removable cover, washable up to 60 °C

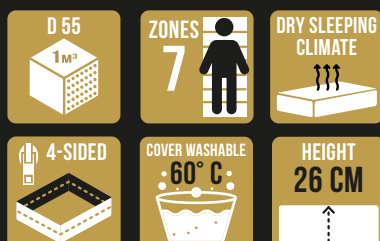
#### Core height

approx. 22 cm

#### Total height

approx. 26 cm

Total size*	Item no	Item no	Item no
in cm	Firmness level H2	Firmness level H3	Firmness level H4
80 x 200	03 900 230 245	03 900 231 245	03 900 232 245
90 x 190	03 900 230 128	03 900 231 128	03 900 232 128
90 x 200	03 900 230 159	03 900 231 159	03 900 232 159
100 x 200	03 900 230 132	03 900 231 132	03 900 232 132
120 x 200	03 900 230 134	03 900 231 134	03 900 232 134
140 x 200	03 900 230 143	03 900 231 143	03 900 232 143
160 x 200	03 900 230 150	03 900 231 150	03 900 232 150
180 x 200	03 900 230 152	03 900 231 152	03 900 232 152
200 x 200	03 900 230 154	03 900 231 154	03 900 232 154



# COMO TTFK



## COMO TTFK

BARREL POCKET SPRING CORE MATTRESS

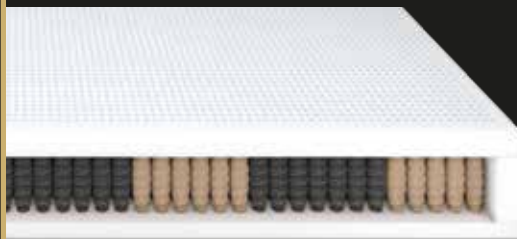


# COMO TTFK

## BARREL POCKET SPRING CORE MATTRESS



Core height: approx. 22 cm



### Reinforced edge support

➔ Provides sturdy support when sitting on the edge of the mattress

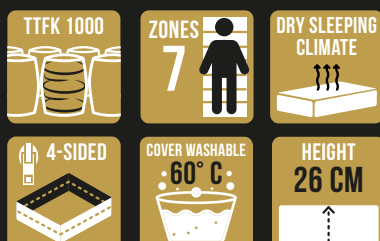
### Latex top layer

➔ Latex top layer lets the body sink in very gently and relieves pressure

### High-quality barrel pocket spring core

➔ Extremely high point-elasticity thanks to the 1000 barrel pocket spring core

➔ Extremely good body support from the core base



### FEATURES

- Cover fabric** Double layer fabric - 61% polyester, 35% viscose and 4% elastane (lycra) quilted with 200 g/m<sup>2</sup> climate fibre and 10 mm comfort foam padding
- Core** approx. 22 cm high 1000 barrel pocket spring core (688 springs for 90 x 200 cm) with 7 ergonomic comfort zones  
Surface with approx. 5 cm high Latex top layer - 20% natural rubber and 80% industrially manufactured latex without filling (D 70)
- Hygiene** Removable cover, washable up to 60 °C
- Core height** approx. 22 cm
- Total height** approx. 26 cm

Total size*	Item no	Item no	Item no
in cm	Firmness level H2	Firmness level H3	Firmness level H4
80 x 200	03 900 240 245	03 900 241 245	03 900 242 245
90 x 190	03 900 240 128	03 900 241 128	03 900 242 128
90 x 200	03 900 240 159	03 900 241 159	03 900 242 159
100 x 200	03 900 240 132	03 900 241 132	03 900 242 132
120 x 200	03 900 240 134	03 900 241 134	03 900 242 134
140 x 200	03 900 240 143	03 900 241 143	03 900 242 143
160 x 200	03 900 240 150	03 900 241 150	03 900 242 150
180 x 200	03 900 240 152	03 900 241 152	03 900 242 152
200 x 200	03 900 240 154	03 900 241 154	03 900 242 154

# PERUGIA TTFK



# PERUGIA TTFK

BARREL POCKET SPRING CORE MATTRESS





# PERUGIA TTFK

## BARREL POCKET SPRING CORE MATTRESS



Core height: approx. 20 cm



### Rhombi-therm top layer

↳ Soft-Therm top layer lets the body sink in very gently and perfectly, relieving pressure

### Micro barrel pocket spring core

↳ Lets the body sink in thanks to the intensive point-elastic 2000 micro barrel pocket spring core  
 ↳ Good ventilation of the mattress

### FEATURES

- Cover fabric** Double layer fabric - 61% polyester, 35% viscose and 4% elastane (lycra) quilted with 200 g/m<sup>2</sup> climate fibre and 10 mm comfort foam padding
- Core** approx. 22 cm high 2000 barrel pocket spring core with high-quality Soft-Therm top layer (D 55)
- Hygiene** Removable cover, washable up to 60 °C
- Core height** approx. 22 cm
- Total height** approx. 26 cm

Total size*	Item no	Item no
in cm	Firmness level H2	Firmness level H3
80 x 200	03 900 350 245	03 900 351 245
90 x 190	03 900 350 128	03 900 351 128
90 x 200	03 900 350 159	03 900 351 159
100 x 200	03 900 350 132	03 900 351 132
120 x 200	03 900 350 134	03 900 351 134
140 x 200	03 900 350 143	03 900 351 143
160 x 200	03 900 350 150	03 900 351 150
180 x 200	03 900 350 152	03 900 351 152
200 x 200	03 900 350 154	03 900 351 154

**TTFK 2000**

**ZONES 7**

**DRY SLEEPING CLIMATE**

**4-SIDED**

**COVER WASHABLE 60° C**

**HEIGHT 26 CM**





*Brinkhaus*

## OTHER COLLECTIONS

**BOX SPRING BEDS**

**UPHOLSTERED BEDS**

**DOWN DUVETS**

**DUVETS**

**PILLOWS**

**INNOVATIVE SLEEPING CULTURE SINCE 1847**



*Brinkhaus*

**BRINKHAUS GMBH**

Vennweg 22  
46395 Bocholt  
Germany

TEL. + 49 2871 219 70 - 0  
FAX + 49 2871 219 70 - 29

export@brinkhaus.de  
www.brinkhaus.de

Terms of delivery: ex works (EXW), warehouse in Poland  
Terms of payment: payment in advance

**Disclaimer**

PRINTING ERRORS    printing errors remain reserved  
DEVIATIONS        colour and product deviations as well as delivery options remain reserved  
VALIDITY            This price list replaces all previous price lists  
STATUS              01.12.2023

Sale and delivery are carried out in accordance with the Unitary Conditions of the German Textile Industry.  
Place of execution and place of jurisdiction are for both parties in Bocholt, Germany.

