



Brinkhaus

Luxury lifestyle

DUVETS &
PILLOWS



INNOVATIVE SLEEPING CULTURE SINCE 1847

The success story that is BRINKHAUS, a company full of tradition, began in Warendorf, Germany, in 1847. A lot has happened since then. We now face new markets, new requirements and new challenges. But we have dealt with it all in a flexible, innovative way – without compromising our proven BRINKHAUS quality.

BRINKHAUS products are manufactured in accordance with the latest production developments and techniques – and, of course, in accordance with the customer's requirements and wishes. We purchase high-quality materials and fillings from all over the world for use in our products.

Today, the BRINKHAUS brand stands for the very highest quality in over 40 countries around the world.

LIVING TRADITION

Duvets and pillows are not the only things we manufacture in our factory, we also tailor sleeping culture to perfection! Drawing on more than 170 years of experience in craftsmanship and technique, we develop innovative products for the future, constantly striving to improve and optimise them.





Brinkhaus

Luxury lifestyle

CONTENTS



DOWN AND FEATHERS

THE DUVETS

- 06 THE EIDER
- 08 ARCTIC
- 10 CHATEAU
- 12 CHALET

THE PILLOWS

- 08 ARCTIC
- 10 CHATEAU
- 14 CHALET
- 16 DOWN AROUND



NATURAL HAIR AND FIBRE

THE QUILTS

- 20 KONYA
- 22 PAMIR



TEXTILE FIBRE

THE QUILTS

- 26 COCOON

THE PILLOWS

- 28 PERLA



SPECIALS

- 30 SEALS OF QUALITY
- 31 QUALITY INDEX



DOWN AND FEATHERS

...envelop you softly and cuddly, because only the best down is selected for our products. It is especially cuddly and has a heat insulating and temperature regulating effect like hardly any other material. Just the right thing for high standards – and for you!

Luxury lifestyle



THE EIDER



THE EIDER

THE EIDERDOWN DUVET



Brinkhaus

Luxury lifestyle



Nature has created the Icelandic eiderdown. Eiderdown is very large, but finer and denser than any other type of down. Eider ducks brave Arctic storms and use their unique breast and stomach feathers to protect their nests. After the chicks hatch, experienced harvesters carefully collect this valuable material without disturbing the birds. The result is a luxurious insulation, central to our exclusive LUXURY LIFESTYLE collection.



Cover fabric

Due to the special properties of eiderdown, we do not use only conventional cover fabrics that may prevent the cosy down from escaping. Eiderdown can also be held by fine, natural silk fabrics. This also promotes the exchange of heat and breathability of eiderdown duvets.

Design

To ensure the filling is distributed perfectly, we first weigh the filling for each square and painstakingly fill each pocket of our eiderdown duvets by hand.

THE EIDER THE EIDERDOWN DUVET

SPECIFICATIONS

| | |
|----------|--|
| Casing | 3 different options are available, see details below |
| Filling | pure new Eiderdown (100% down), class I, DIN EN 12934:1999 |
| Washable | professional dry-cleaning |

| Product | Product Code | Size in cm | Filling Weight |
|---|--------------|------------|----------------|
| EIDERDOWN DUVET TOG 4.5 LIGHT | | | |
| quilted squares, basis 10 x 14, approx. 70 g/m ² | 22006 | 135 x 200* | 200 g |
| | 22032 | 200 x 200* | 295 g |
| | 22007 | 230 x 220* | 380 g |
|  | 22625 | 240 x 220* | 385 g |
| | 22008 | 260 x 220* | 405 g |
| | 22009 | 280 x 235* | 480 g |
| EIDERDOWN DUVET TOG 10.5 WARM | | | |
| quilted squares, basis 7 x 10, approx. 170 g/m ² | 27449 | 135 x 200* | 460 g |
| | 27450 | 200 x 200* | 680 g |
| | 27451 | 230 x 220* | 860 g |
|  | 27153 | 240 x 220* | 895 g |
| | 27152 | 260 x 220* | 970 g |
| | 27154 | 280 x 235* | 1,120 g |
| EIDERDOWN DUVET TOG 13.5 EXTRA WARM | | | |
| quilted squares, basis 7 x 10, approx. 215 g/m ² | 22027 | 135 x 200* | 595 g |
| | 22038 | 200 x 200* | 880 g |
| | 22028 | 230 x 220* | 1,110 g |
|  | 22551 | 240 x 220* | 1,200 g |
| | 22029 | 260 x 220* | 1,230 g |
| | 22026 | 280 x 235* | 1,420 g |

THE CASING



01
Casing 100% silk
Colour cream



03
Casing 100% silk
Colour ash



05
Casing 100% silk
Colour nature

ARCTIC



ARCTIC

THE DOWN DUVET AND PILLOW



Brinkhaus

Luxury lifestyle



ARCTIC

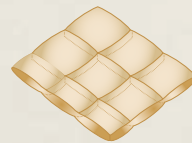
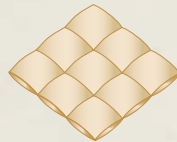
THE DOWN DUVET AND PILLOW

These new BRINKHAUS LUXURY LIFESTYLE duvets and pillows combine the traditional value of first-class down duvets with modern technology. The fabric consists of the finest silk and Tencel® (lyocell). Lyocell shares many properties with other cellulosic fibres such as cotton and linen. Some of the main characteristics of lyocell fibres are that they are soft, absorbent and very strong when wet or dry, and resistant to wrinkles. Silk is a traditional material for luxurious fabrics: the flat surfaces of the fibrils reflect light at many angles, giving the fabric a natural shine. Silk has a smooth, soft texture that is not slippery. Both materials combined in a finest satin fabric result in a very soft, very shiny and luxurious fabric. The filling is a high-grade down from a grey duck: the down cluster is very soft and very large, with a very high fill power and high thermal insulation.

SPECIFICATIONS

| | |
|----------|---|
| Casing | finest satin, 63% lyocell / 37% silk, TC 449 |
| Filling | new silverwhite Arctic duck down, sticky, (100% down), class I, DIN EN 12934:1999 |
| Design | Down Duvet with satin piping, with mother-of-pearl press studs Down Pillow with satin piping |
| Washable | professional dry-cleaning |
| Colour | cream |

| Product | Product Code | Size in cm | Filling Weight |
|--|--------------|------------|----------------|
| DOWN DUVET TOG 4.5 LIGHT | | | |
| box stitch construction, basis 8 x 10 squares, approx. 70 g/m ² | 22045 | 135 x 200 | 200 g |
| | 21630 | 155 x 200* | 220 g |
| | 21631 | 155 x 220* | 240 g |
| | 22046 | 200 x 200* | 290 g |
| | 21632 | 200 x 220* | 310 g |
| | 22047 | 230 x 220 | 370 g |
| | 21633 | 240 x 220* | 380 g |
| | 22048 | 260 x 220 | 420 g |
| | 27431 | 260 x 240* | 460 g |
| | 22049 | 280 x 235* | 490 g |
| DOWN DUVET TOG 8.5 MEDIUM | | | |
| cassette construction, basis 5 x 7 squares, approx. 150 g/m ² | 22050 | 135 x 200 | 400 g |
| | 21634 | 155 x 200* | 460 g |
| | 21635 | 155 x 220* | 510 g |
| | 22051 | 200 x 200* | 590 g |
| | 21636 | 200 x 220* | 660 g |
| | 22052 | 230 x 220 | 750 g |
| | 21637 | 240 x 220* | 780 g |
| | 22053 | 260 x 220 | 850 g |
| | 27432 | 260 x 240* | 930 g |
| | 22054 | 280 x 235* | 980 g |
| DOWN PILLOW SOFT | | | |
| | 27023 | 50 x 75 | 550 g |
| | 27024 | 50 x 90* | 650 g |
| | 27031 | 50 x 70* | 510 g |
| | 27032 | 65 x 65* | 620 g |



* production lead time approx. 20 working days

CHATEAU



CHATEAU

THE DOWN DUVET AND PILLOW



The Down Duvet

The beautiful white and gold piping attracts attention and shows the difference at the first sight. Encased by ultra fine long staple cotton batiste with Argan oil finishing, these duvets and pillow provide superb softness. Argan oil – known as Morocco’s „liquid gold“ – contains rare ingredients (e. g. shottenol) which are used to treat skin complaints and wounds; Argan oil also has a very high content of vitamin E. Advantages attributed to Argan oil: skincare, soft touch, protection against skin ageing.

The Down Pillow

The pillow is designed in 2 chambers. The smaller chamber is filled more densely so as to provide additional support for the neck area. The main chamber is medium filled allowing the head to sink in softly.



CHATEAU

THE DOWN DUVET AND PILLOW

SPECIFICATIONS

| | |
|----------|---|
| Casing | ultra fine 100% long staple cotton batiste, Nomite® certified, downproof, TC 325, with peach skin finishing, treated with Argan oil |
| Filling | pure new white large cluster Canadian goose down, class I, DIN EN 12934:1999 Down Duvet 100% down Down Pillow 90% down |
| Design | Down Duvet with white/golden piping, with detachable buttons Down Pillow 2-chambers, with/golden piping |
| Washable | up to 60°C |
| Colour | white |

| Product | Product Code | Size in cm | Filling Weight |
|---|--------------|------------|----------------|
| DOWN DUVET TOG 4.5 LIGHT | | | |
| box stitch construction, basis 6 x 8 squares, approx. 75 g/m ² | 22899 | 135 x 200 | 200 g |
| | 22900 | 155 x 200* | 235 g |
| | 22901 | 155 x 220* | 255 g |
| | 22902 | 200 x 200* | 300 g |
| | 22903 | 200 x 220* | 330 g |
| | 22904 | 230 x 220 | 380 g |
| | 22905 | 240 x 220* | 400 g |
| | 22906 | 260 x 220 | 430 g |
| | 27439 | 260 x 240* | 470 g |
| | 27440 | 280 x 235* | 500 g |
| DOWN DUVET TOG 10.0 WARM | | | |
| cassette construction, basis 4 x 6 squares, approx. 165 g/m ² | 22907 | 135 x 200 | 450 g |
| | 22908 | 155 x 200* | 510 g |
| | 22909 | 155 x 220* | 565 g |
| | 22910 | 200 x 200* | 660 g |
| | 22911 | 200 x 220* | 730 g |
| | 22912 | 230 x 220 | 840 g |
| | 22913 | 240 x 220* | 870 g |
| | 22914 | 260 x 220 | 950 g |
| | 27441 | 260 x 240* | 1,040 g |
| | 27442 | 280 x 235* | 1,100 g |
| DOWN PILLOW MEDIUM | | | |
| 2-chamber pillow | 21793 | 50 x 75 | 600 g |
| | 21794 | 50 x 90* | 720 g |
| | 21795 | 50 x 70* | 560 g |
| | 21796 | 65 x 65* | 690 g |

* production lead time approx. 20 working days

CHALET



CHALET

THE DOWN DUVET



Imagine a breathtaking, timeless world which combines a sense of peace and comfort with striking natural beauty. These are surroundings in which you feel completely at home. Our high-quality CHALET duvets and pillows combine tradition and innovation. The remarkable combination of materials used for the casing and filling creates a product that is both lightweight and soft, ensuring perfect sleeping comfort all year round. An ultra-light nano-batiste, made from 100% cotton is used for the casing, while the specially selected filling is created by using white large cluster goose down. CHALET duvets are available in light, medium and warm versions. Press studs on the individual covers allow you to combine the duvets any way you like. Perfect sleeping comfort throughout the seasons. The CHALET pillows on the following page make the perfect sleep setting complete.



CHALET

THE DOWN DUVET

SPECIFICATIONS

| | |
|----------|--|
| Casing | nano-batiste (100% cotton), with peach skin finishing, ultra-light, Nomite® certified, downproof, TC 348 |
| Filling | pure new white large cluster Canadian goose down (100% down), class I, DIN EN 12934:1999 |
| Design | with satin piping and mother-of-pearl press studs |
| Washable | up to 60°C |
| Colour | white |

| Product | Product Code | Size in cm | Filling Weight | |
|---|--|------------|----------------|---------|
| DOWN DUVET TOG 3.5 LIGHT | | | | |
|  | box stitch construction, basis 8 x 10 squares, approx. 55 g/m ² | 22389 | 135 x 200 | 150 g |
| | | 22305 | 155 x 200* | 170 g |
| | | 22306 | 155 x 220* | 190 g |
| | | 22390 | 200 x 200* | 220 g |
| | | 22307 | 200 x 220* | 250 g |
| | | 22391 | 230 x 220 | 280 g |
| | | 22323 | 240 x 220* | 290 g |
| | | 22392 | 260 x 220 | 320 g |
| | | 27155 | 260 x 240* | 350 g |
| | | 22067 | 280 x 235* | 370 g |
| | 20153 | 300 x 240* | 400 g | |
| DOWN DUVET TOG 8.5 MEDIUM | | | | |
|  | cassette construction, basis 5 x 7 squares, approx. 150 g/m ² | 21403 | 135 x 200 | 400 g |
| | | 22327 | 155 x 200* | 460 g |
| | | 22328 | 155 x 220* | 510 g |
| | | 21404 | 200 x 200* | 590 g |
| | | 22329 | 200 x 220* | 650 g |
| | | 21405 | 230 x 220 | 750 g |
| | | 22070 | 240 x 220* | 780 g |
| | | 21406 | 260 x 220 | 850 g |
| | | 27156 | 260 x 240* | 930 g |
| | | 22068 | 280 x 235* | 980 g |
| | 20152 | 300 x 240* | 1,070 g | |
| DOWN DUVET TOG 10.5 WARM | | | | |
|  | cassette construction, with 3 cm outer baffle, basis 4 x 6 squares, approx. 215 g/m ² | 29919 | 135 x 200 | 580 g |
| | | 29920 | 155 x 200* | 660 g |
| | | 29921 | 155 x 220* | 730 g |
| | | 29922 | 200 x 200* | 860 g |
| | | 29923 | 200 x 220* | 950 g |
| | | 29924 | 230 x 220 | 1,090 g |
| | | 29925 | 240 x 220* | 1,130 g |
| | | 29926 | 260 x 220 | 1,230 g |
| | | 29927 | 260 x 240* | 1,340 g |
| | | 29928 | 280 x 235* | 1,410 g |

CHALET



CHALET

THE DOWN PILLOW



Perfect sleeping comfort throughout the seasons is complemented by our CHALET pillow programme. These pillows offer an incomparably restful sleep. The voluminous down filling supports head and neck, the ultrafine shell fabric has a very luxurious touch.

The CHALET pillow – a wonderfully soft down pillow to snuggle up to and feel good. Absolute luxury quality, comes from a real passion for excellence. At BRINKHAUS, we have that passion and take pride in constantly striving for new and even higher peaks of perfection and achievement.

The side sleeper pillows are natural, beautiful, soft and luxurious pillows with an outer baffle edge that is designed to allow the mature full-sized goose down filling to give loft and support to the outermost edge of the pillow. This allows the head to rest in the centre of the pillow whilst the baffle edge nestles against the neck and shoulder for excellent comfort, especially for those who prefer to sleep on their side.

The neck support pillow offers extra comfort: The pillow is designed in a similar way to a three-chamber pillow. The outer chambers are filled with high-quality down which gives the pillow its remarkable softness. The centre of the pillow consists of an ergonomically-shaped core of viscoelastic foam that supports your head and neck in a manner perfectly tailored to your anatomy and, in contrast to other conventional neck support pillows, can be used on both sides. The special comfort advantage: The pillow effectively provides support while remaining cosy so that you can sleep in comfort.



CHALET THE DOWN PILLOW

SPECIFICATIONS

| | | |
|----------|---------|--|
| Pillow | Casing | nano-batiste (100% cotton), ultra fine, Nomite® certified, downproof, TC 348 |
| | Filling | new white large cluster Canadian goose down (90% down), class I, DIN EN 12934:1999 |
| | Design | with satin piping |
| Washable | | up to 60 °C |
| Colour | | white |

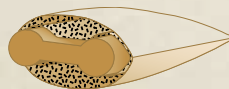
| Product | Product Code | Size in cm | Filling Weight |
|--------------------|--------------|------------|----------------|
| PILLOW SOFT | | | |
| | 27283 | 50 x 75 | 550 g |
| | 27284 | 50 x 90* | 650 g |
| | 27033 | 50 x 70* | 510 g |
| | 27034 | 65 x 65* | 620 g |

| Product | Product Code | Size in cm | Filling Weight |
|-----------------------------------|--------------|------------|----------------|
| SIDE SLEEPER PILLOW MEDIUM | | | |
| box construction | 27035 | 50 x 75 | 600 g |
| | 27036 | 50 x 90* | 720 g |
| | 27037 | 50 x 70* | 560 g |
| | 27038 | 65 x 65* | 680 g |

SPECIFICATIONS

| | | |
|---------------------|---------|---|
| Neck Support Pillow | Casing | finest cambric in 100% Egyptian long staple cotton, Nomite® certified, downproof, TC 267 |
| | Filling | outer chambers: new white Masurian goose down (90% down), class I, DIN EN 12934:1999 inner filling: removable memory foam core |
| | Design | with satin piping, with zipper |
| Washable | | up to 60 °C |
| Colour | | white |

| Product | Product Code | Size in cm | Filling Weight |
|---------------------------------|--------------|------------|----------------|
| NECK SUPPORT PILLOW FIRM | | | |
| | 87372 | 40 x 60 | core + 230 g |



DOWN AROUND



DOWN AROUND

THE DOWN PILLOW



A pillow with a touch of luxury. The peripheral outer baffle gives the pillow an elegant shape and also provides excellent support and loft. An ideal pillow for people who love the luxury of a soft down filling but do not wish to dispense with support. The pillow has a feather core, providing support and volume. The two outside chambers are filled with 90% down, making them particularly cosy.



DOWN AROUND

THE DOWN PILLOW

SPECIFICATIONS

| | | | |
|----------|--|---|--|
| Casing | finest satin in 100% Egyptian long staple cotton, Nomite® certified, downproof, TC 380 | | |
| Filling | outer chambers | new white Masurian goose down (90% down), class I, DIN EN 12934:1999 | |
| | inner chamber | new white European goose feathers (100% feathers), class I, DIN EN 12934:1999 | |
| Design | 3-chamber pillow, box construction, with twin piping | | |
| Washable | up to 60°C | | |
| Colour | white | | |

| Product | Product Code | Size in cm | Filling Weight |
|-------------------------------|--------------|------------|-----------------|
| DOWN PILLOW SOFT | | | |
| | 27027 | 50 x 75 | 310 g + 310 g |
| | 27028 | 50 x 90 | 370 g + 370 g |
| | 27043 | 50 x 70* | 290 g + 290 g |
| | 27044 | 65 x 65* | 350 g + 350 g |
| DOWN PILLOW MEDIUM | | | |
| | 27045 | 50 x 75 | 310 g + 540 g |
| | 27046 | 50 x 90 | 370 g + 650 g |
| | 27047 | 50 x 70* | 290 g + 500 g |
| | 27048 | 65 x 65* | 350 g + 600 g |
| DOWN PILLOW FIRM | | | |
| | 27029 | 50 x 75 | 360 g + 670 g |
| | 27030 | 50 x 90 | 430 g + 800 g |
| | 27049 | 50 x 70* | 290 g + 630 g |
| | 27050 | 65 x 65* | 350 g + 750 g |
| DOWN PILLOW EXTRA FIRM | | | |
| | 27051 | 50 x 75 | 360 g + 930 g |
| | 27052 | 50 x 90 | 430 g + 1,120 g |
| | 27053 | 50 x 70* | 290 g + 870 g |
| | 27054 | 65 x 65* | 350 g + 1,050 g |





NATURAL HAIR AND FIBRE

*Only the most exclusive, finest and precious natural hair:
especially light and cosy, with well-balanced moisture
management and heat retention. The perfect material
for everyone who would like to experience
the original feeling of nature!*

Luxury lifestyle



KONYA



KONYA

THE NATURAL QUILT



Brinkhaus

Luxury lifestyle



The KONYA quilt is the choice of the connoisseur. It conjures up the very essence of the Orient, lavish opulence, comfort and pure luxury, all in amazing silk. At BRINKHAUS, we use only luxury Tussah wild silk which means that the silk is gathered after the silk worm has pupated and the moth gone from the cocoon. Pure silk is an ideal natural filling for medium and summer weight quilts because it is relatively light, lofty and cool, yet it is inherently body responsive and holds heat as needed.

KONYA


THE NATURAL QUILT

SPECIFICATIONS


| | |
|----------|---------------------------------|
| Casing | finest satin, 100% silk, TC 434 |
| Filling | 100% pure finest silk |
| Design | opposing waves with outer rim |
| Washable | professional dry-cleaning |
| Colour | cream |

| Product | Product Code | Size in cm | Filling Weight |
|---------|--------------|------------|----------------|
|---------|--------------|------------|----------------|

SILK QUILT TOG 6.0 LIGHT

| Product | Product Code | Size in cm | Filling Weight |
|--|--------------|------------|----------------|
| approx. 220 g/m ² | 53854 | 135 x 200* | 600 g |
|  | 53855 | 155 x 200* | 680 g |
| | 53856 | 155 x 220* | 750 g |
| | 53857 | 200 x 200* | 880 g |
| | 53858 | 200 x 220* | 970 g |
| | 53859 | 230 x 220* | 1,110 g |
| | 53860 | 240 x 220* | 1,160 g |
| | 53861 | 260 x 220* | 1,260 g |
| | 53862 | 260 x 240* | 1,370 g |
| | 53863 | 280 x 235* | 1,450 g |

SILK QUILT TOG 7.5 MEDIUM

| Product | Product Code | Size in cm | Filling Weight |
|---|--------------|------------|----------------|
| approx. 330 g/m ² | 79929 | 135 x 200* | 900 g |
|  | 79965 | 155 x 200* | 1,030 g |
| | 79966 | 155 x 220* | 1,130 g |
| | 79930 | 200 x 200* | 1,330 g |
| | 79975 | 200 x 220* | 1,460 g |
| | 79931 | 230 x 220* | 1,690 g |
| | 79976 | 240 x 220* | 1,760 g |
| | 79932 | 260 x 220* | 1,910 g |
| | 55953 | 260 x 240* | 2,080 g |
| | 79933 | 280 x 235* | 2,190 g |



* production lead time approx. 20 working days

PAMIR



PAMIR

THE CASHMERE QUILT



Brinkhaus

Luxury lifestyle



Combining lightness and warmth with luxurious drape, this luxury PAMIR cashmere-filled duvet is the ultimate and alternative filling for those who do not want synthetics or down. Using the down equivalent, i. e. the soft fine undercoat hair of the Cashmere goat, we have created a highly absorbent luxurious filling offering outstanding heat retention and exceptional comfort.

PAMIR

THE CASHMERE QUILT

SPECIFICATIONS

| | |
|----------|--|
| Casing | nano batiste (100% cotton), with peach skin finishing, ultra light, Nomite® certified, downproof, TC 348 |
| Filling | 100% pure cashmere |
| Design | diamond stitching |
| Washable | professional dry-cleaning |
| Colour | white |

| Product | Product Code | Size in cm | Filling Weight |
|---|--------------|------------|----------------|
| CASHMERE-FILLED DUVET TOG 7.0 MEDIUM | | | |
| approx. 280 g/m ² | 53864 | 135 x 200* | 750 g |
| | 53865 | 155 x 200* | 870 g |
| | 53866 | 155 x 220* | 950 g |
| | 53867 | 200 x 200* | 1,120 g |
| | 53868 | 200 x 220* | 1,230 g |
| | 53869 | 230 x 220* | 1,420 g |
| | 53870 | 240 x 220* | 1,480 g |
| | 53871 | 260 x 220* | 1,600 g |
| | 53872 | 260 x 240* | 1,750 g |
| | 53873 | 280 x 235* | 1,840 g |



* production lead time approx. 20 working days



TEXTILE FIBRE

...Do you lead an eventful life? Place high value on comfort and hygiene?

*Ranging from cosy duvets to duvets with elaborate functionality,
the selection of textile fibres will surprise you.*

*Easy to launder and absolutely cosy. The high-quality
all-round talent for individual sleep requirements.*

The custom-fit corners guarantee a perfect fit.

Luxury lifestyle





COCOON



COCOON

THE TEXTILE FIBRE QUILT



Brinkhaus

Luxury lifestyle



This high-quality, light filling made of the ultra-fine AIR-FILL® functional fibre is extremely breathable and moisture-regulating resulting in a dry and warm sleeping climate. The functional fibre has been refined to create numerous tiny air pockets rather like down. AIR-FILL® functional fibre has high insulation properties facilitating the light fill weight of the duvet and similar to that of modern ski jackets.



THE BODY ZONE STITCHING

Thanks to the body zone stitching, the duvet drapes ideally around the body thus forming a cocoon with a pleasant sleeping climate and the highest comfort. The stitching follows the body's contours thus making a cocoon with constant heat retention. Ideal warmth distribution is assured - especially around the shoulders and feet. A quilted edging rim closes the duvet from the ambient air. Duvets with body zone stitching and a quilted edging rim assure great and recuperative sleep as well as a pleasantly dry sleeping climate with great heat retention. Body zone stitching offers unparalleled cosiness and the first-rate materials guarantee exceptional sleeping comfort.




COCOON

THE TEXTILE FIBRE QUILT

SPECIFICATIONS

| | |
|----------|---|
| Casing | nano-batiste (100% cotton), with peach skin finishing, ultra-light, downproof, TC 348 |
| Filling | AIR-FILL® (100% polyester) |
| Design | with mother-of-pearl-press studs |
| Washable | up to 60°C |
| Colour | white |

| Product | Product Code | Size in cm | Filling Weight |
|--|--------------|------------|----------------|
| CONTOUR-STITCH QUILT TOG 4.0 LIGHT | | | |
| body zone stitching, approx. 100 g/m ²  | 53874 | 135 x 200* | 270 g |
| | 53875 | 155 x 200* | 310 g |
| | 53876 | 155 x 220* | 340 g |
| | 53877 | 200 x 200* | 400 g |
| | 53878 | 200 x 220* | 440 g |
| | 53879 | 230 x 220* | 510 g |
| | 53880 | 240 x 220* | 530 g |
| | 53881 | 260 x 220* | 570 g |
| | 53882 | 260 x 240* | 620 g |
| | 53883 | 280 x 235* | 660 g |

| Product | Product Code | Size in cm | Filling Weight |
|--|--------------|------------|----------------|
| CONTOUR-STITCH QUILT TOG 8.5 MEDIUM | | | |
| body zone stitching, approx. 200 g/m ²  | 53884 | 135 x 200* | 540 g |
| | 53885 | 155 x 200* | 620 g |
| | 53886 | 155 x 220* | 680 g |
| | 53887 | 200 x 200* | 800 g |
| | 53888 | 200 x 220* | 880 g |
| | 53889 | 230 x 220* | 1,010 g |
| | 53890 | 240 x 220* | 1,060 g |
| | 53891 | 260 x 220* | 1,140 g |
| | 53892 | 260 x 240* | 1,250 g |
| | 53893 | 280 x 235* | 1,320 g |

PERLA



PERLA

THE MULTIPLE OPTIONS PILLOW



Brinkhaus

Luxury lifestyle



The new PERLA pillow provides multiple options and utmost comfort: high-quality material and functionality. The outer pillow provides a down-like touch due to the AIR-FILL® functional fibre, which is extremely breathable and moisture-regulating. Rhombo-fill® in the inner pillow is the patient-care approved filling material in the form of rhombically tailored PUR sticks. Rhombo-fill® provides pressure-relieving soft support. The inner pillow can be easily removed if desired.

PERLA

THE MULTIPLE OPTIONS PILLOW

SPECIFICATIONS

| | | | |
|----------|---|---|--|
| Casing | finest satin in 100% Egyptian long staple cotton, Nomite® certified, TC 380 | | |
| Filling | Outer pillow | AIR-FILL® (100% polyester) | |
| | Inner pillow | Rhombo-fill® (100% polyurethane sticks) | |
| Design | Outer pillow | divided into 3 chambers on each side, with climate band all around, with zipper | |
| | Inner pillow | divided into 3 chambers, with zipper | |
| Washable | up to 60°C | | |
| Colour | white | | |

| Product | Product Code | Size in cm | Filling Weight |
|-----------------------------|--------------|------------|----------------|
| PILLOW SOFT + MEDIUM | | | |
| with removable inner pillow | 54260 | 50 x 75* | 500 + 355 g |
| inner pillow | 54261 | 50 x 70* | 470 + 330 g |

THE DESIGN



Pillow with removable inner pillow to adjust the pillow individually



SEALS OF QUALITY

ÖKO-TEX®

Product identification with the label "Confidence in Textiles" and the connected proven safety of textile products is an additional sales argument which surveys have found to be more important to consumers than price, functionality or brand. Widespread use and customer awareness of the OEKO-TEX® Standard 100 contribute to the OEKO-TEX® label now having a status similar to that of a brand name and being actively requested by consumers. Marking products with the OEKO-TEX® label therefore provides all textile and clothing manufacturers with valid certificates with an effective way of drawing more attention to their products. Without visible labels, consumers are not in a position to assess the human ecological quality of the textiles.



**STANDARD
100**
93.0.4158
Hohenstein



**STANDARD
100**
599-0601
Hohenstein



**STANDARD
100**
Z1.0.7662
Hohenstein

NOMITE®

The NOMITE® mark indicates that a product is suitable for house dust mite allergy sufferers: because down- and feather-filled products offer excellent thermal and climatic conditions for humans (rapid warming up when one is sleeping, rapid decrease in humidity when the bedding is aired), they provide a very poor habitat for house dust mites, which rely on high humidity to live. The tight weave of the down- and featherproof fabric acts as a barrier, preventing the mites from passing through, and therefore offers additional protection - so that those who suffer from house dust allergies or asthma can also enjoy the natural comfort afforded by down and feather bedding. This has been demonstrated by scientific research.



www.nomite.com

DAUNASAN®

Daunasan® stands for the highest standards of quality and sustainability. Our products are certified with renowned quality labels that underscore our commitment to excellent standards and responsible manufacturing processes. Each Daunasan® product carries the OEKO-TEX® Standard 100 certification, which guarantees that it has been tested for harmful substances and is therefore safe for health. By choosing Daunasan®, you not only opt for products that offer maximum comfort but also for an environmentally friendly and sustainable choice. Trust in our quality - for restful sleep and a clear conscience.



www.downafresh.com

DOWNPASS

The goal of the DOWNPASS standard is to contribute to the ethical sourcing of down and feathers, and to help companies to firmly anchor and further develop the aspects of animal welfare during the sourcing of feathers and down in everyday business by reviewing suppliers in the industry supply chain. DOWNPASS Standard 2017 stands for No live-pucking, No material from the foie gras production and monitoring the breeding conditions. Down and feathers as by-products of poultry production are only available when geese and ducks are consumed. The supply chain of every company in the bedfeather and bedding industry is international and individual. The standard also represents the way to the large breeding areas as well as to small farms and collectors. Recording down and feathers according to their origin and their way of winning and to implement the aspects of animal welfare is a big task.





Brinkhaus

Luxury lifestyle

QUALITY INDEX

THE FILLING

Choosing the right duvet filling depends on your warmth needs, sleep habits, and climate. BRINKHAUS offers a refined selection to suit every preference.

Our most exclusive option is 100% eiderdown – ultra-light and highly insulating. Goose down and Arctic duck down also provide excellent warmth with minimal weight. Silk adapts naturally to body temperature, while cashmere offers soft warmth and moisture control. For allergy-friendly comfort, AIR-Fill® (100% polyester) is breathable and easy to care for. Whichever filling you choose, every BRINKHAUS duvet is crafted with precision and care – for exceptional sleep quality.

DOWN

The perfect duvet filling, has been used for centuries now. This little miracle of nature, which has countless tiny air pockets between its individual hairs, provides excellent heat insulation and absorbs moisture, immediately transporting it out to the surrounding air. So your body stays warm and dry.

SILK

Silk is 100% natural, silk has an absorption of about 30% of its own weight and silk has the special characteristic of immediately being able to release the absorbed moisture into the air. Temperature differences in the body are absorbed by the silk and it is unique in being able to adapt to the body's temperature changes. Silk is derived from the cocoon of silk moth the caterpillar and thus an animal fibre.

CASHMERE

From time immemorial it has been synonymous with the most precious and fine natural animal hair. It comes from the Cashmere goat which lives in the Central Asian highlands of China and Mongolia. It is characterised by its special softness and smoothness. Cashmere hair acts as a climate regulator and assures excellent sleeping comfort.

MAN-MADE SYNTHETIC FIBRE

Duvets and pillows filled with modern textile fibres are functional, incredibly easy to care for and extremely hygienic, whilst also being cuddly soft and lightweight. As such products are washable at up to 60°C or 95°C and are suitable for tumble-drying, they are particularly highly recommended for people with dust allergies.

AIR-FILL®

The AirFill® fiber offers exceptional comfort with its soft, down-like feel, while being vegan and allergy-friendly. It provides excellent breathability and humidity regulation, ensuring a comfortable sleep by absorbing and releasing moisture. The fiber also promotes great air circulation and offers high warmth without heat buildup. Easy to care for, it is washable at 60°C, making it perfect for allergy sufferers.

Combining softness, warmth, and hygiene, AirFill® is a versatile and functional filling material.



Brinkhaus

Luxury lifestyle

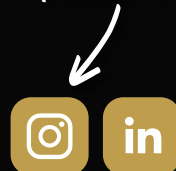
Printing errors, colour and product deviations as well as delivery options remain reserved.

STAND 01.04.2026

Explore
the digital
catalogue!



Follow us!



@brinkhaus.bedding
Brinkhaus GmbH

BRINKHAUS GMBH

Vennweg 22 • 46395 Bocholt • Germany
TEL. + 49 2871 21970 - 15 • FAX + 49 2871 21970 - 29
export@brinkhaus.de • www.brinkhaus.de

W0755-3